

30 010 809

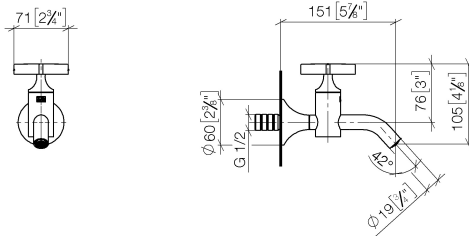


- 151mm projection
- fixed spout
- circular, air-enriched flow
- adapter with male thread 3/4"
- hole diameter 35 mm
- rosette Ø 60 mm
- max. flow 4.5 l/min
- lead-free
- This product can help a building meet the requirements of Green Building Rating Systems, e.g. LEED®, BREEAM®, DGNB

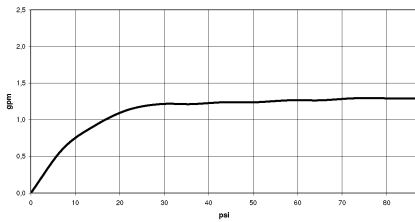
	Chrome	30 010 809-00 0010
	Brushed Platinum	30 010 809-06 0010
	Platinum	30 010 809-08 0010
	Dark Chrome	30 010 809-19 0010
	Brushed Durabronze (23kt Gold)	30 010 809-28 0010
	Brushed Bronze	30 010 809-42 0010
	Brushed Champagne (22kt Gold)	30 010 809-46 0010
	Champagne (22kt Gold)	30 010 809-47 0010
	Brushed Dark Platinum	30 010 809-99 0010

30 010 809

mm [inches]



Flow rate chart

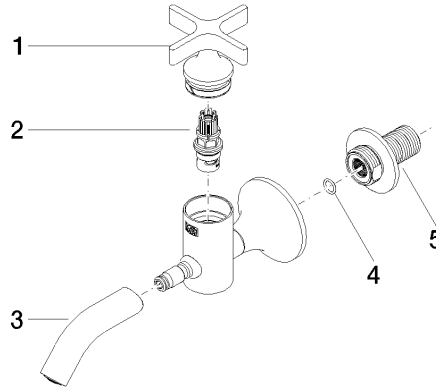


Codes & Standards

California Energy  
Commission  
(CEC)

30 010 809

Parts for other finishes can be found here: Brushed Platinum



### Spare parts list

No.	Item Number	Name	Quantity used	Delivery time
1	90 20 66 025 00-00	handle	1	10
2	90 90 03 175 00 90	top	1	2
3	90 28 22 381 01-00	spout	1	10
4	90 14 10 060 00 90	seal	1	2
5	09 24 03 269 90	nipple	1	2